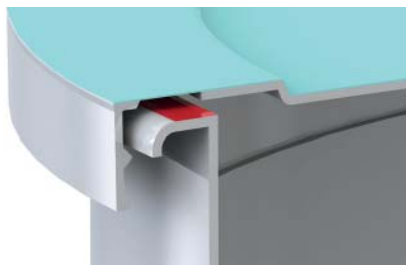


Articles reporting on plastic products are prepared from information furnished by members of the IAPD and non-member magazine advertisers. It should not be assumed that the publisher has reviewed or tested any of the products. For more information, contact companies by calling their phone numbers or by visiting their websites.



Spartech 1-Seal lid technology

Spartech Corporation has introduced a new in-mold labeled lidding system for premium packaging. The 1-Seal™ system eliminates the need for an additional foil seal or film membrane, providing food marketers with a strong, environmentally friendly packaging solution. By leaving a portion of the in-mold label surface exposed inside the lid, the 1-Seal technology allows a container to be capped and sealed without the need for an additional foil seal or membrane. This streamlines the sealing process by completely removing a step, and reduces waste due to membrane failures and membrane scrap. With the 1-Seal solution, food and consumer packaging companies can be sure they are optimizing production efficiency and lowering costs. The 1-Seal technology is consumer friendly as well. Since the label, lid and tray are made of the polypropylene, the container is 100 percent recyclable. Its user-friendly, re-sealable closure system provides a secure, airtight seal, ensuring the freshness of products at the store and at home. The containers are heat tolerant and microwavable. www.spartech.com.

Thin plastic sheet in slit-to-width rolls

Ensinger's Penn Fibre Division now offers TECAPEEK® thin plastic sheet in slit to width rolls made with Victrex® PEEK polymer. Penn Fibre has produced TECAPEEK in 2 x 4 foot sheets at .04"-



.187" thick, but this is the first time it has been offered in rolls. In addition, the company is now making product that at .020" is 50 percent thinner than previous offerings. According to General Manager John Cowperthwait, "Offering rolls of sheet rather than flat sheet provides a real benefit to users who punch or cut parts on high speed equipment." It improves yields by allowing users to specify exactly the width needed for the part and allows for much higher speed continuous stamping or cutting. Additionally, applications such as wear strips and doctor blades used to scrape material off process equipment, value the plastic as a long strip. These applications often require relatively long lengths and benefit from the chemical and heat resistance of TECAPEEK. TECAPEEK rolls can be slit very thin (down to .25") and used in the manufacture of high temperature cable ties or strapping in aerospace applications where inherent low flame and smoke generation demand materials that meet stringent aircraft requirements. By punching holes in the strip, manufacturers can produce high temperature drive belts and push-pull actuators. TECAPEEK rolls may even provide both manufacturing and performance benefits for certain conveyor systems that travel through very high temperature environments. www.pennfibre.com.

Single flute spiral cutting tools

LMT Onsrud LP introduces balanced single flute spiral cutting tools to run at RPMs as high as 60,000. Manufacturers that specialize in marketing CNC routers for the sign industry have incorporated high speed spindles into their design. The advantages of high spindle speeds is an increase in feed rates in plastic, aluminum and wood sheet material, which are commonly used in the sign industry. Multiple flute tools are naturally balanced by design, but in some cases, single flute spiral tools are not. Single flute spiral tools are naturally unbalanced due to the location and amount of the carbide removed during the grinding process. LMT Onsrud developed a method to balance single flute spiral tools by engineering design and a specialized manufacturing process. www.onsrud.com.



TRIAAC AT hot air tool

Leister Technologies AG announces the TRIAC AT hot air tool, the successor to the TRIAC PID and a cost-effective alternative to the TRIAC S. It is designed for demanding plastic welding and shrinking jobs that require precise temperature and processing control. Compared to its predecessor, the TRIAC AT's "e-drive" display is easier to read and use, and can be set to save preferred parameters for speed, temperature and air volume. It also allows for more intuitive operations and handling — users press and turn the button to start. The TRIAC AT features an intuitive display, precise closed-loop temperature controls, independent air-flow adjustment, an ergonomic design for optimal handling, automatic cool down capabilities and energy-saving mode. TRIAC AT applications span: roofing, industrial fabrics, plastic fabrication, flooring, civil engineering and shrinking. www.leister.com.

SYSPRO Quantum Architecture for SMBs

SYSPRO has launched a four-part architectural platform designed for small- and mid-sized business (SMB) manufacturers and distributors. Called "Quantum Architecture™", it's a framework for managing technology diversity, data diversity and advancing people collaboration and energy, despite change. Paralleling Einstein's Quantum theory of matter and energy, SYSPRO says it is targeting ERP implementation, communications/reporting, workflow processes, security issues, regulatory/financial change and mobile/cloud requirements. The Quantum Architecture embeds four key components for managing hardware, software, data and process diversity: a multi-source, single repository architectural map, high definition data collaboration modeling, pre-configured, multi-layer process/workflows and embedded role-based enterprise performance management (EPM) analytics, reports and measurement. <http://erp.syspro.com/sysproquantumarchitecture.html>.



Containment and bullet resistant glazing

Palram Americas has unveiled the PALSIELD™ product line of containment and bullet resistant polycarbonate glazing. PALSIELD is engineered to meet various levels of ballistics and forced entry test standards. Its layered structure and no spall design can withstand physical attack and multi-shot assault while the abrasion resistant coating ensures long-term clarity. PALSIELD is nearly half the weight of the glass equivalent products. PALSIELD includes a seven year limited warranty against structural delamination, coating failure, loss of abrasion resistance, yellowing and loss of light transmittance. PALSIELD may be used as security glazing in banks, convenience stores, prisons, government facilities, ticket booths, kiosks and more. www.palramamericas.com/palshield.



Vertical panel saw on the go

Hendrick Manufacturing Corporation has launched the GoSaw, a vertical panel saw for those with limited work space, small budgets or mobile operations. The Hendrick is fully portable, weighing less than 60 pounds, and it can be set up or stowed away in seconds. When stowed, it can fit in the back of a small pickup truck. The GoSaw supports sheets up to 4' x 8' and can accurately cut pieces to a few inches in size. The machine supports cross cutting, rip cutting and bevel cutting up to 45°. Geometry and quality manufacturing ensure the GoSaw remains stable, cuts accurately and its

support for cordless saws means it can be used almost anywhere. GoSaw applications include kitchen, bath and office fitters, builders, sign makers, do-it-yourself outlets, export packers, lumber yards, plastics distributors, furniture makers and small shops with limited budgets, space or cutting requirements. www.hendrickmanufacturing.com.



Boltaron 9815E FAR rated high impact sheet

Boltaron 9815E proprietary thermoplastic alloy offers greater impact resistance than competitive 6565-rated PVC/acrylic sheet, making it an ideal material from which to thermoform high-performance interior components of commercial, military and private aircraft, according to Boltaron Director, Adam Mellen. The sheet exhibits Izod impact resistance of 5.0 ft. lbs/in. (265 J/m), compared with 3.0 ft. lbs/in. (159 J/m) for alternative 65/65-compliant sheet, significantly improving the durability of aircraft interiors. It offers other exceptional physical properties, extreme formability and inclusion-free surface quality. Typical applications include class dividers, dashboard enclosures, galley and lavatory components, video screen bezels, personal service units, seat parts, sidewall panels, tray tables, window shades, air ducts, bulkhead laminates, light housings, window reveals and moldings. The sheet is offered in unlimited colors and seven surface textures, in lengths to 120 in. (3,048 mm), widths to 48" (1,524 mm), thicknesses from .040" to .250" (1.02 to 6.35 mm) and in custom blank sizes. "Sheet products developed to meet the stringent 6565 fire rating must typically sacrifice impact resistance to do so, but the 9815E sheet retains outstanding impact qualities compared with competitive 6565-rated material," says Mellen. The company produces more than 20 grades of fire rated sheet products for specialized aircraft interior applications. www.boltaron.com.



Signet 9900 SmartPro Transmitters

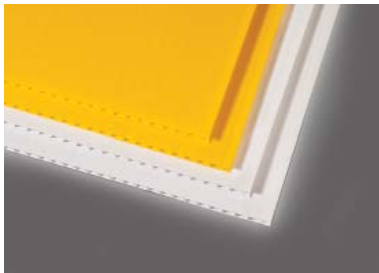
GF Piping Systems introduces the Signet 9900 SmartPro™ Transmitter, part of the SmartPro Family of Instruments. The Signet 9900 Transmitter provides a single-channel interface for multiple parameters including flow, pH, ORP, conductivity/resistivity, pressure, temperature, level, salinity and more. A key feature to the device is its extra-large (3.90" x 3.90") backlit display that allows visibility at 4-5 times the distance of other transmitters. The display shows separate lines for units, main and secondary measurements as well as a dial-type digital bar graph. Other capabilities include relay and warning LEDs and an intuitive menu for easy programming. Designed for flexibility, plug-in modules enable the unit to be adapted for customer needs. Optional modules include relay, direct conductivity/resistivity, HART communications (H COMM), and a PC configuration tool (PC COMM). The 9900 Smart Pro Transmitter is offered in panel or field mount versions. Both configurations can run on 12 to 32 VDC power. The 9900 can also be loop powered with compatible sensors. Standards and approvals include NEMA 4X/IP65, CE, UL and China RoHS. It is well suited for applications such as water and wastewater treatment, reverse osmosis, deionization, chemical dosing and delivery, metal and plastic finishing, fume scrubbers, cooling towers and all types of filtration. www.gfpiping.com.

EPZ Series Electric Actuators

The EPZ Series Industrial Electric Actuators from Hayward Flow Control is an economical solution for small diameter ball valves and well suited for tight space applications. The EPZ Series is available in two sizes: the EPZ-6 and EPZ-15. The EPZ-6 has a torque out-



put of 55 in.-lb./6 Nm and the EPZ-15 features an output of 135 in.-lb./15 Nm. Both sizes are non-spring return with NEMA 4/4X enclosure and have an ISO5211 F03/F05 mounting pattern. Other key features include on/off jog control capabilities, aluminum alloy dry powder coated housing, additional option power supply flexibility (24 VAC, 120 VAC or 230 VA), thermal Class F motor protection, manual override including lock-out functionality, an included override tool and it is CSA listed. Typical applications or installations include waste and water treatment, chemical processing, food and beverage, pharmaceutical, pulp and paper, irrigation/agriculture, marine or corrosive environments, aquatics and water/theme parks. www.haywardflowcontrol.com.



Omni-Flute Trim & Square sign blank substrate

Omni-Flute™ Trim & Square from 3A Composites USA is a cost-effective fluted polypropylene sheet that is precision-cut on the manufacturing line in the most popular size and color specifications for sign blanks and yard signs. Omni-Flute Trim & Square is available in Bright White and Yellow and 4 mm thick. Stocked Bright White sizes include 18" x 24", 24" x 18", 24" x 36" and 36" x 24" sheets. Stocked Yellow sizes include 18" x 24" and 24" x 18" sheets. Original Omni-Flute was engineered specifically for creating signage and short-term point-of-purchase displays. Omni-Flute is geometrically square and color-consistent. It features a smooth, treated surface that accepts direct digital printing and screen-printing applications as well as paint. Omni-Flute can be die-cut and knife-cut and accepts repositionable vinyl graphics. Omni-Flute is fully recyclable where facilities exist. "The polypropylene material utilized in Omni-Flute naturally expands and contracts during the manufacturing process," said Brandon Wyatt, marketing manager, graphic display, 3A Composites USA. "We're able to use our splitter right on the manufacturing line to cut Omni-

Flute Trim & Square into more exact sheet sizes, saving valuable time for sign fabricators." www.graphicdisplayusa.com.

Bayer MaterialScience coating and sealant

Bayer MaterialScience LLC has developed a new technology for sealers for decorative and polished concrete surfaces. Applicators want a product with chemical and stain resistance, low odor, long-term performance, ease of use and concrete penetration. Bayer developed a two-component (2K) polyurethane waterborne technology for sealers that offers: ease of use, durability, low odor, increased service life and ultra-low volatile organic compounds (below 15 grams per liter). Steven Reinstadtler, construction marketing manager for coatings, Bayer MaterialScience LLC, says that this 2K, polyurethane waterborne technology guards against stains as it is resistant to a wide range of household and industrial chemicals or staining agents. "There are three types of flooring — decorative stained, diamond polished and color-pigmented concrete — that are becoming popular and sustainable flooring options and could use a sealer," says Reinstadtler. "These types of floors are increasingly being installed in higher visibility venues where aesthetics matter, and the 2K, polyurethane waterborne technology for sealers from Bayer protects the flooring while also preserving its aesthetics." The types of flooring on which the sealer would be applied are often found in commercial and retail spaces, such as hotel lobbies and restaurants. The technology is primarily applied to indoor surfaces, but is also appropriate for outdoor applications. www.bmsnafta.com.



Thin gauge TECANYL PPO

Ensinger, Inc. now offers thin gauge TECANYL® PPO sheet, manufactured by Penn Fibre, Ensinger's thin gauge sheet manufacturing division. Thin gauge TECANYL is suitable for industrial high performance applications. Made from

Sabic Noryl EN 265 resin, it exhibits unusually low moisture absorption due to its inherent chemical composition, allowing for good electrical insulating properties over a wide range of temperature and humidity conditions. Chemical attack or degradation from water, salt solutions, acids and bases is also minimal. TECANYL has superior impact strength in addition to continuous use temperature in excess of 220°F/104.44°C. Thin gauge TECANYL PPO sheet is available in three thicknesses: .062", .093" and .125". Ensinger also offers a low 50 sheet minimum on .040". The standard sheet size is 24" x 48". Typical applications for TECANYL are found in computers and business equipment, telecommunications, automotive and medical industries. www.ensinger-ind.com.



Affordable vertical panel saw

The Hendrick ProCut vertical panel saw teams a lightweight yet rigid frame with a moving column for full vertical panel saw functionality in a compact, cost-effective package. The saw head is mounted on the moving column by way of a turntable mounting plate. Switching from cross cutting to rip cutting happens in an instant. The mounting plate allows for quick and easy removal of the saw head, to use it as a hand-held circular saw or to fit the optional router head, available with "floating" capability. The ProCut offers plunge capability (to in excess of 1.5" depth) and the saw can bevel cut (up to 45°). The ProCut's moving column means that once on the machine, material remains stationary. The ProCut's bottom rail features movable work piece supports, facilitating a uniquely straightforward cross cut dimensioning system. Just one measurement needs to be set, from the end of the sheet. These supports can be moved to the middle rail for use with smaller work pieces. The ProCut is fitted with an easy-to-read measurement system. www.hendrickmanufacturing.com.